

Ecological Support Areas Grootvlei, RE225 Caledon



Legend

BSP ESA: Restore

ESA2: Restore from other land use

BSP ESA

ESA: Aquatic

Map Center: Lon: 19°35'29.2"E
Lat: 34°10'36.5"S

Scale: 1:18,056

Date created: 2024/14/06




Source: Esri, DeLorme, GeoEye, (Geo), GeoCrawler, and the GIS User Community
Sources: Esri, DeLorme, Garmin, FAO, NOAA, USGS, © OpenStreetMap contributors, and the GIS User Community
CapeNature


Critical Biodiversity Areas Grootvlei, RE225 Caledon




Legend

BSP CBA: Degraded

 CBA2: Aquatic

 CBA2: Terrestrial

BSP CBA

 CBA: Wetland

Map Center: Lon: 19°35'29.2"E
Lat: 34°10'36.5"S

Scale: 1:18,056

Date created: 2024/14/06



Aquatic Features Grootvlei, RE225 Caledon



Legend

Wetlands (NFEPA)

- Artificial
- Natural

Rivers

- Non-Perennial

Map Center: Lon: 19°35'29.2"E
Lat: 34°10'36.5"S

Scale: 1:18,056

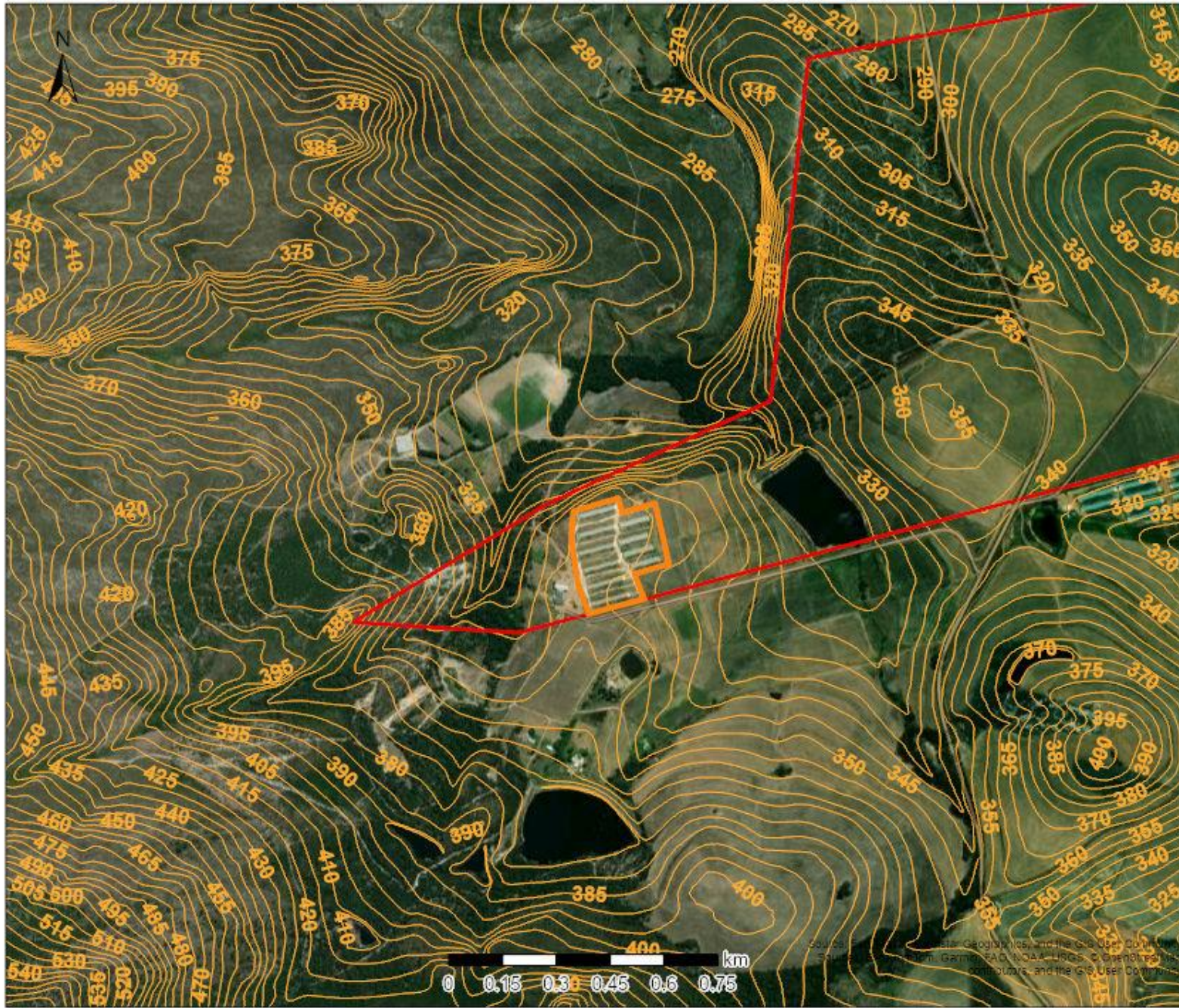
Date created: 2024/14/06



Western Cape
Government
FOR YOU

© 2024 Western Cape Government. Data sources: National Geospatial Information (GAS/RD), South African National Geomatics, and the GIS User Community. Esri, TomTom, Garmin, Esri, NOAA, USGS, © OpenStreetMap contributors, and the GIS User Community.

Topography Grootvlei, RE225 Caledon



Legend

5m Contours

Map Center: Lon: 19°35'29.2"E
Lat: 34°10'36.5"S

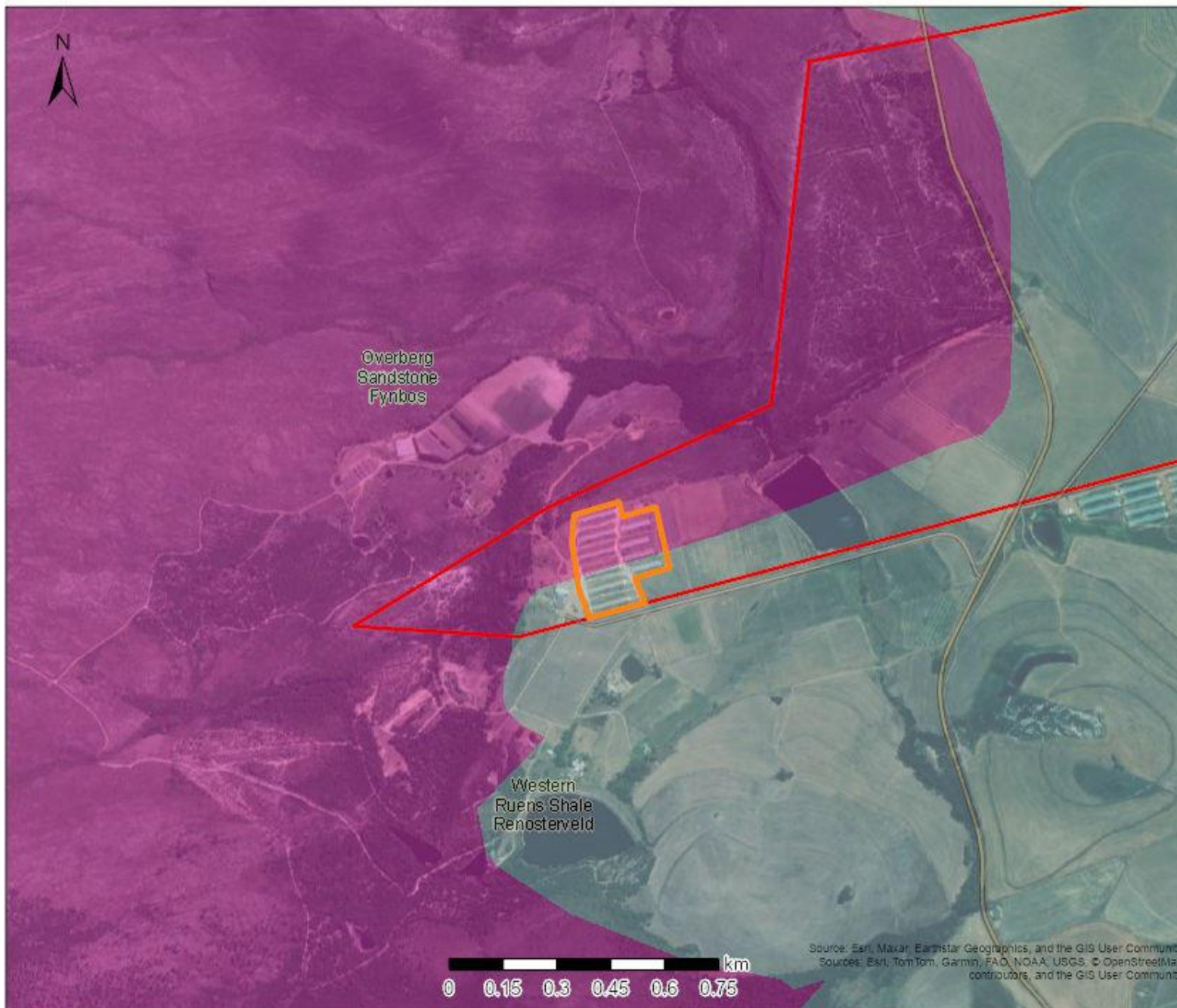
Scale: 1:18,056

Date created: 2024/14/06



**Western Cape
Government**
FOR YOU

Vegetation Grootvlei, RE225 Caledon



Legend

VEGMAP 2018

- FFs 12 Overberg Sandstone Fynbos
- FRs 11 Western Ruens Shale Renosterveld

Map Center: Lon: 19°35'29.2"E
Lat: 34°10'36.5"S

Scale: 1:18,056

Date created: 2024/14/06



Western Cape
Government
FOR YOU